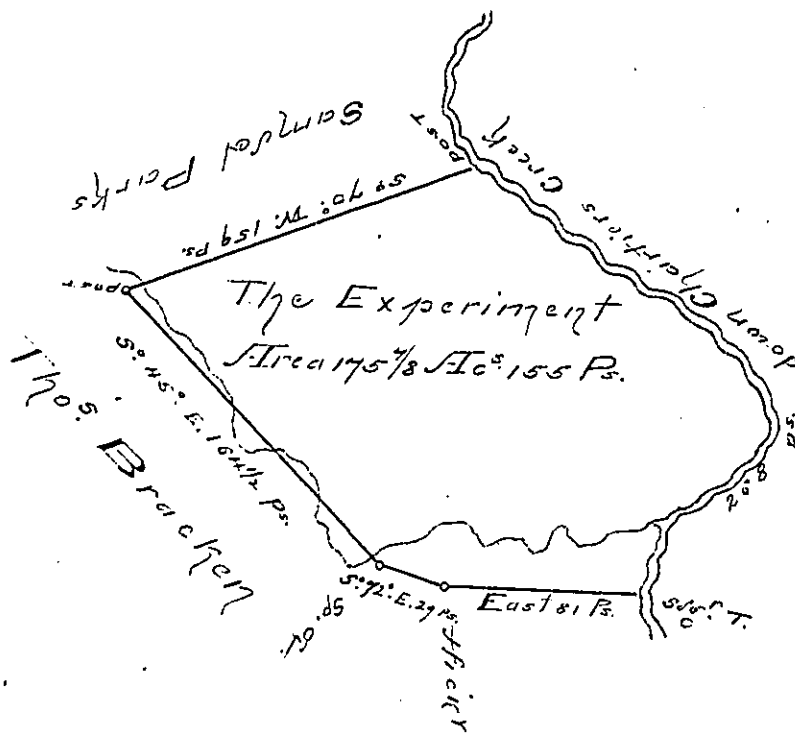


Courses led down  
the C<sup>1</sup>

- N<sup>o</sup> 10: E. 31 Ps.
  - N<sup>o</sup> 55: E. 48 Do.
  - N<sup>o</sup> 24: E. 21 Do.
  - N<sup>o</sup> 47: W. 76 Do.
  - N<sup>o</sup> 56: W. 92 Do.
- 208



A Draught of a Survey called "The Experiment" situate on Charters C<sup>1</sup> in Washington County cont<sup>g</sup> 175 Ac 155 Ps. and the usual Allow<sup>ce</sup> for Highways &c. executed Decem<sup>r</sup> 4<sup>th</sup> 1786 in Pursuance of a Warr<sup>t</sup> granted to J<sup>o</sup> Parks for 180 Ac. dated Sept. 4<sup>th</sup> 1786.

Note:- this survey was first made on a Pre-emption Warr<sup>t</sup> granted to David Parks by the Govern<sup>t</sup> of Virg<sup>a</sup> but not being duly entered the above mentioned Warr<sup>t</sup> hath been obtained on which it is now returned.

Just Lukens Esq. J.G. Insley Kevell } S.J.  
Matt<sup>o</sup> Ritchie }

IN TESTIMONY that the above is a copy of the original remaining on file in the Department of Internal Affairs of Pennsylvania, made conformably to an Act of Assembly approved the 16th day of February, 1833. I have hereunto set my Hand and caused the Seal of said Department to be affixed at Harrisburg, this

— third — day of — March — 1896.

*James Watta*  
Secretary of Internal Affairs.